

Centre Number	Candidate Number	Name
---------------	------------------	------

UNIVERSITY OF CAMBRIDGE INTERNATIONAL EXAMINATIONS
International General Certificate of Secondary Education

CO-ORDINATED SCIENCES

0654/03

Paper 3

May/June 2004

2 hours

Candidates answer on the Question Paper.
No Additional Materials are required.

READ THESE INSTRUCTIONS FIRST

Write your Centre number, candidate number and name on all the work you hand in.
Write in dark blue or black pen in the spaces provided on the Question Paper.
You may use a soft pencil for any diagrams, graphs or rough working.
Do not use staples, paper clips, highlighters, glue or correction fluid.

Answer **all** questions.
The number of marks is given in brackets [] at the end of each question or part question.
A copy of the Periodic Table is printed on page 24.

For Examiner's Use

1	
2	
3	
4	
5	
6	
7	
8	
9	
10	
Total	

If you have been given a label, look at the details. If any details are incorrect or missing, please fill in your correct details in the space given at the top of this page.

Stick your personal label here, if provided.

1 Fig. 1.1 shows five animals that live in Australia.



echidna



kultarr



fruit bat

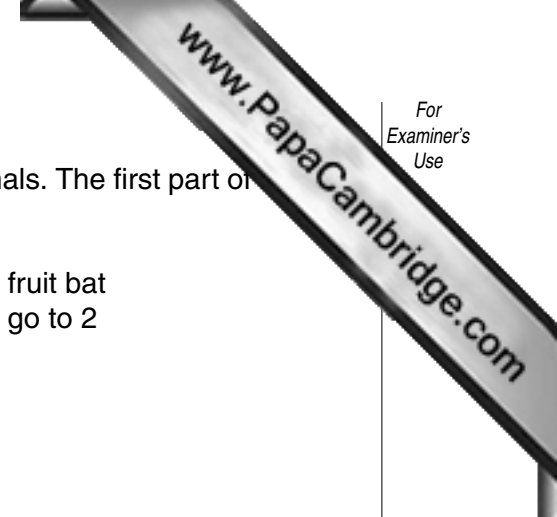


wallaby



quoll

Fig. 1.1



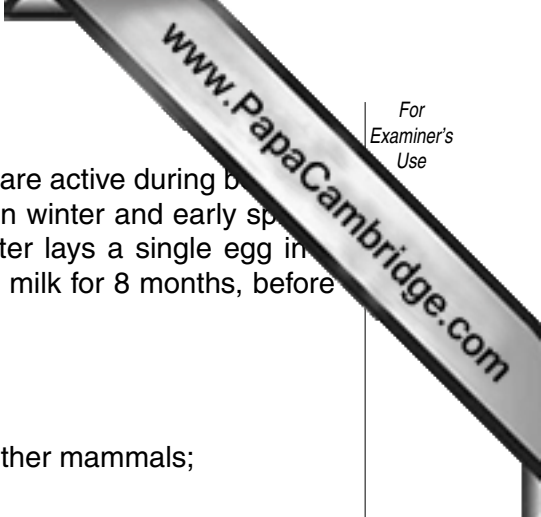
(a) Construct a key to enable the identification of these five animals. The first part of the key has been done for you.

- 1 a Front pair of legs modified to form wings. fruit bat
- b No wings go to 2

[4]

(b) State **one** feature, visible in the diagrams, which indicates that all of these animals are mammals.

.....[1]



(c) Echidnas feed on ants and termites, and have no teeth. They are active during both day and night, and shelter in burrows or hollow logs. They mate in winter and early spring, and fertilisation takes place in the female's oviducts. She later lays a single egg in a nest. After hatching, the young echidna feeds on its mother's milk for 8 months, before changing to an adult diet.

Using the information above, state

(i) **two** features of echidnas that make them different from other mammals;

.....
.....[2]

(ii) **two** features of echidna reproduction that are characteristic of mammals.

.....
.....[2]

2 A television set receives radio signals from a transmitter. The television set decodes the signals and produces a picture on the screen by firing electrons at it. The picture is composed of many tiny coloured dots of light.

(a) Radio waves and light are two types of electromagnetic wave.

Name **one** other type of electromagnetic wave and state a use for this radiation.

electromagnetic wave

use[2]

(b) State **one** property that all electromagnetic waves have in common.

.....[1]

(c) The screen of a television set is often found coated with dust which has been attracted to the screen. Suggest why the dust is attracted to the screen.

.....
.....
.....[2]

(d) The dots of light produced on the screen consist of the three primary colours of light.

(i) Name these three colours.

1.

2.

3.

[2]

(ii) Suggest why only three colours are needed.

.....
.....[1]

3 The metal magnesium is used to make alloys for use in car and aircraft manufacture.

- (a) Suggest and explain **one** desirable property of an alloy which would make it particularly suitable for making aircraft parts.

.....

.....

.....[2]

- (b) Magnesium metal is made industrially by electrolysis using molten magnesium chloride as the electrolyte.

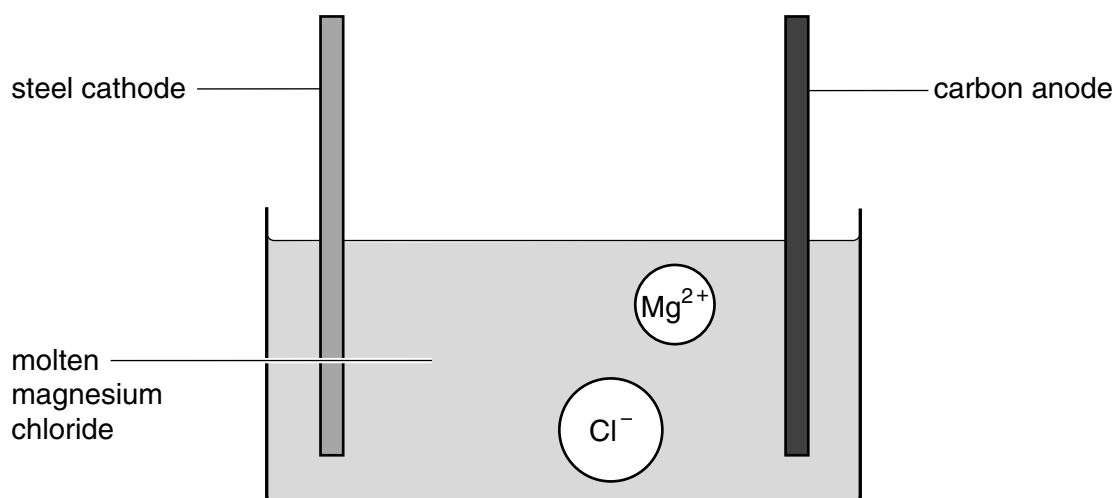


Fig. 3.1

The schematic diagram of the electrolysis in Fig. 3.1 also includes symbols representing a magnesium ion and a chloride ion.

- (i) Deduce the chemical formula of magnesium chloride and explain your answer briefly.

.....

.....[2]

- (ii) Explain why the magnesium chloride used in this process has to be molten.

.....

.....[2]

- (iii) Describe how magnesium ions are converted into magnesium atoms during electrolysis.

.....

[2]

- (iv) In the factory making magnesium, the container of electrolyte is **not** open to the air that the workers breathe.

Suggest the reason for this.

.....
[1]

- (c) Fig. 3.2 shows two electrical cells in which magnesium ribbon is used as one of the electrodes. In both cells magnesium is the more reactive metal.

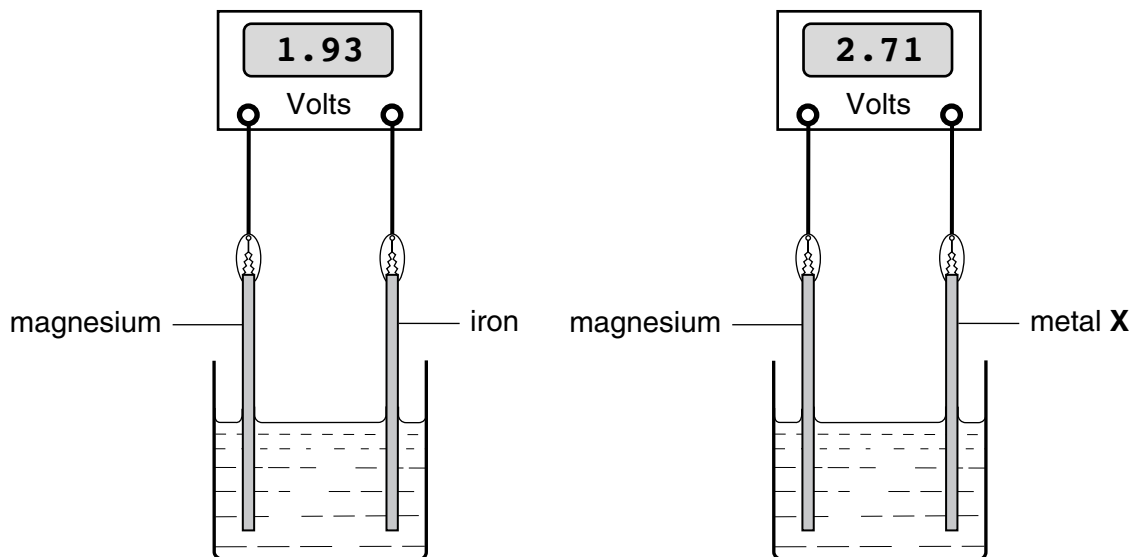


Fig. 3.2

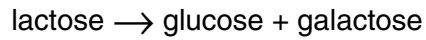
Use the information in Fig. 3.2 to deduce how the reactivity of metal X compares with that of iron.

.....

[2]

- 4 Milk contains a sugar called lactose. Many people do not have the enzyme lactase, which digests lactose, in their digestive system, so drinking milk can make them feel ill.

Several large food companies therefore produce and sell lactose-reduced milk. They add lactase to warm milk and allow time for the lactase to catalyse this reaction:



One food company uses lactase obtained from a fungus. Fig. 4.1 shows how the rate of the reaction is affected by temperature when this fungal lactase is used.

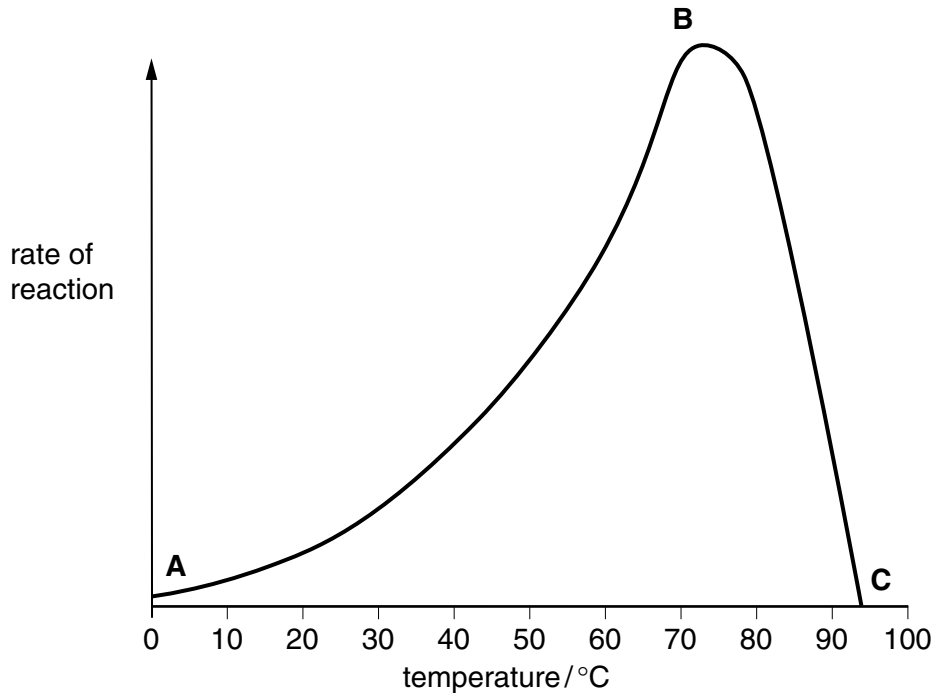


Fig. 4.1

- (a) Explain the reasons for the shape of the graph between

(i) **A** and **B**;

.....

.....

.....[3]

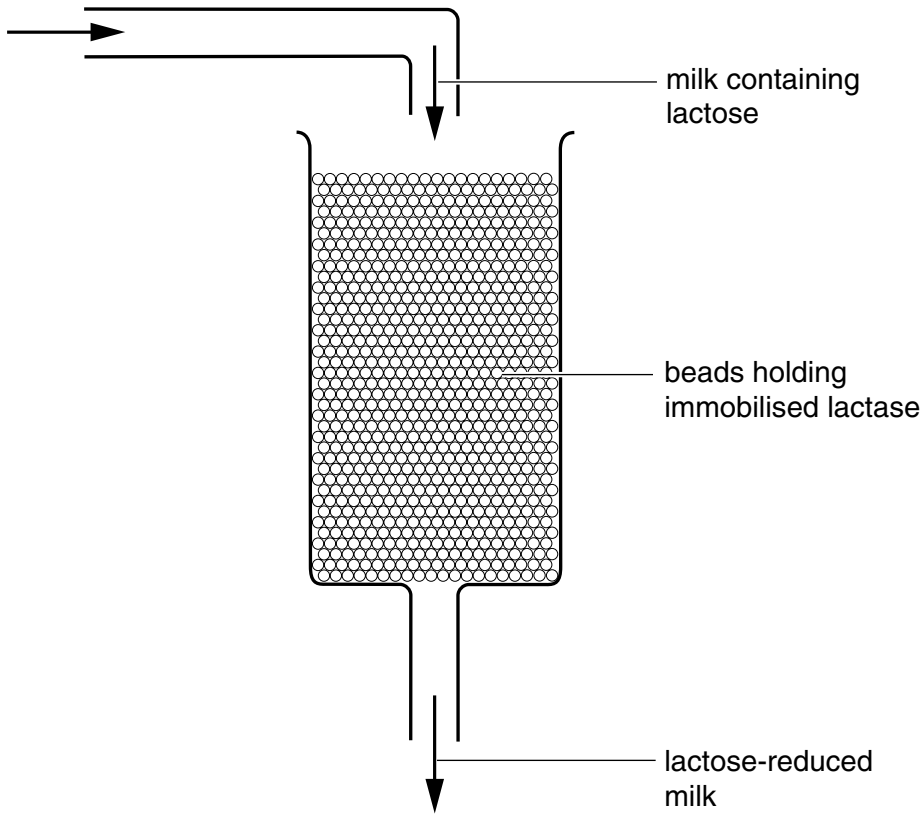
(ii) **B** and **C**.

.....

.....[2]

- (b) On the graph, draw a curve to show the result you would expect if lactase from a human was used, rather than the lactase obtained from a fungus. [2]

- (c) The food company uses lactase in a special form. Rather than just mixing a lactase solution with milk, the lactase is attached to little beads of jelly. The lactase is said to be immobilised. The milk is then allowed to run through the beads holding the immobilised lactase.



- (i) Explain, in terms of the way in which enzymes work, why these beads can be used over and over again.

.....

[2]

- (ii) Suggest **one** advantage, other than being able to reuse the beads, of using immobilised lactase rather than a lactase solution.

.....
[1]

- (d) Describe where and how the glucose produced from the breakdown of lactose is absorbed from the human digestive system.

.....

[2]

- 5 Fig. 5.1 shows a fishing boat using ultrasound waves to detect shoals of fish.

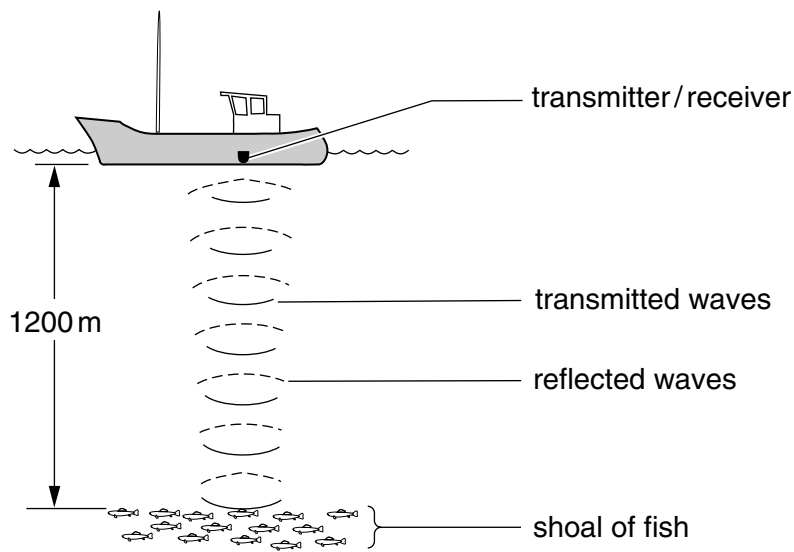


Fig. 5.1

- (a) The speed of ultrasound waves in water is 1500 m/s.

The frequency of the ultrasound waves used for detecting fish is 50 000 Hz.

Calculate the wavelength of the ultrasound waves.

Show your working and state the formula that you use.

formula

working

.....[3]



(b) The fish are at a depth of 1200 m.

Calculate the time it would take for the ultrasound waves to travel from the transmitter to the fish and back to the receiver.

Show your working and state the formula that you use.

formula

working

.....[3]

(c) Ultrasound waves can also be used to scan an unborn baby in the mother's uterus.

Suggest why ultrasound waves are used rather than X-rays.

.....
.....[2]

(d) Ultrasound waves are waves with a frequency higher than a human can hear.

State the highest frequency that a human can usually hear.

.....[1]

6 Fig. 6.1 shows the path of a river.

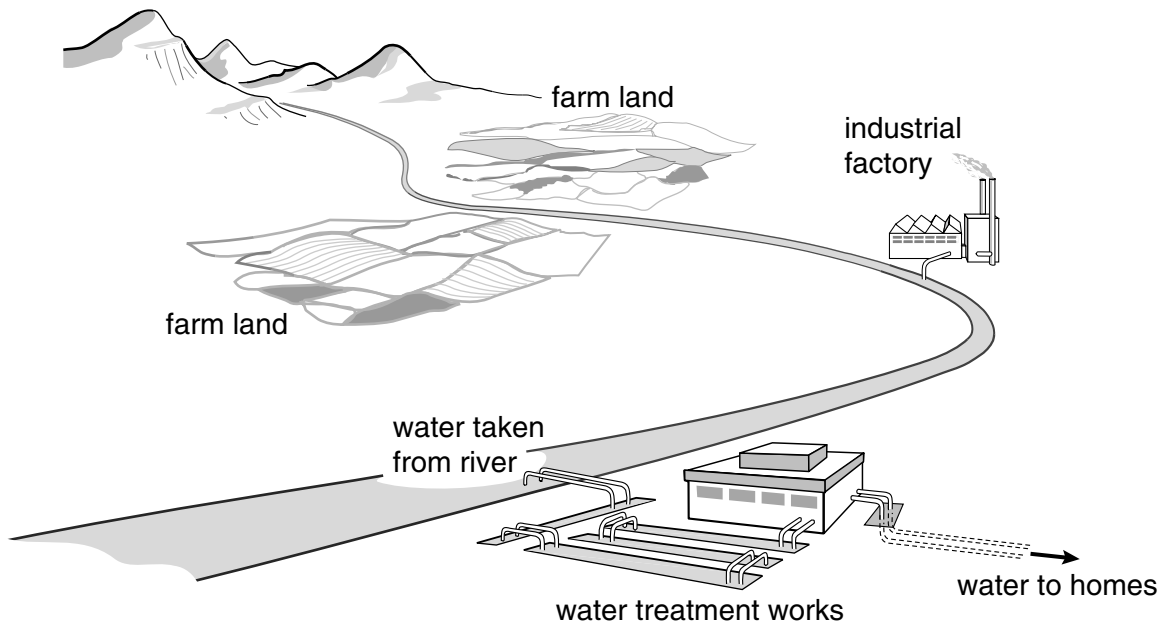


Fig. 6.1

(a) (i) Describe briefly **two** ways in which the water in this river could become polluted.

.....

[2]

(ii) In the water treatment works, water from the river is filtered.

Explain why filtering alone does not make the water safe for humans to drink.

.....

[3]

(iii) State another process which might be carried out in the water treatment works that makes the water safe for human consumption.

.....[1]

- (b) Temporary hard water contains dissolved calcium hydrogencarbonate, $\text{Ca}(\text{HCO}_3)_2$.

When temporary hard water is boiled the following reaction occurs, causing limescale form.



- (i) Explain why boiling removes temporary hardness from water.

.....
.....[1]

- (ii) A student boiled a 0.5 dm^3 sample of temporary hard water until only solid calcium carbonate remained.

The mass of the calcium carbonate residue was 0.25 g.

Calculate the concentration in mol/dm^3 of calcium hydrogencarbonate in the original water sample.

Show your working.

.....
.....[3]

7 (a) Fig. 7.1 shows a circuit containing five ammeters, A_1 , A_2 , A_3 , A_4 and A_5 .

The reading on ammeter A_3 is 2.0 A and the reading on ammeter A_4 is 1.5 A.

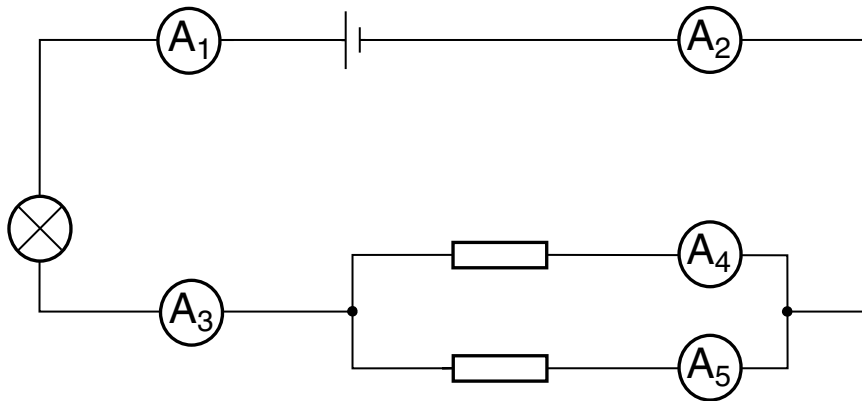


Fig. 7.1

(i) Calculate the readings on the other ammeters.

A_1 reads

A_2 reads

A_5 reads

[2]

(ii) State the number of coulombs per second passing through ammeter A_3 .

.....[1]

(b) Fig. 7.2 shows another circuit containing three voltmeters, V_1 , V_2 and V_3 .

The reading on voltmeter V_2 is 6 V.

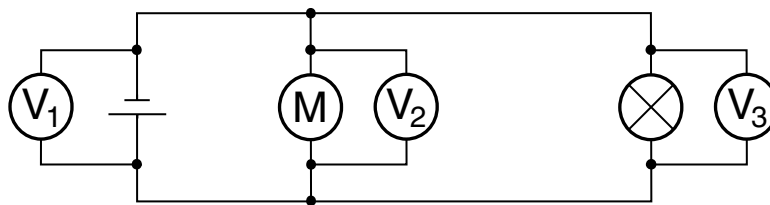


Fig. 7.2

State the readings on the other two voltmeters.

V_1 reads

V_3 reads

[1]

(c) Fig. 7.3 shows a bathroom. Explain why it can be dangerous to have power points in bathrooms.

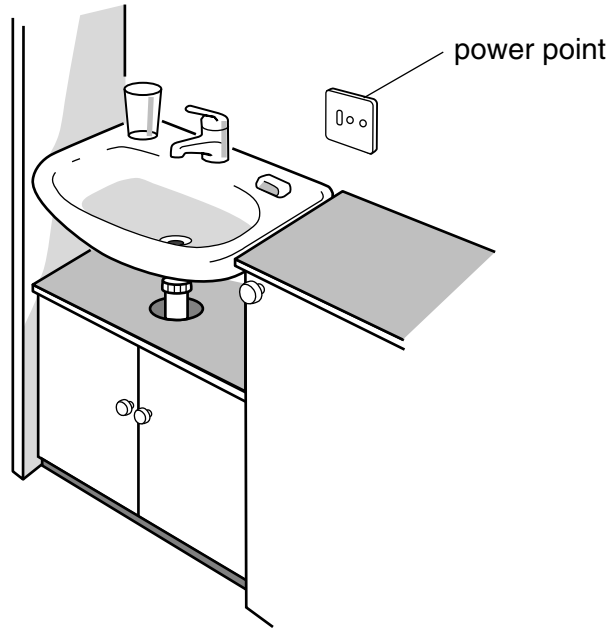


Fig. 7.3

.....

.....

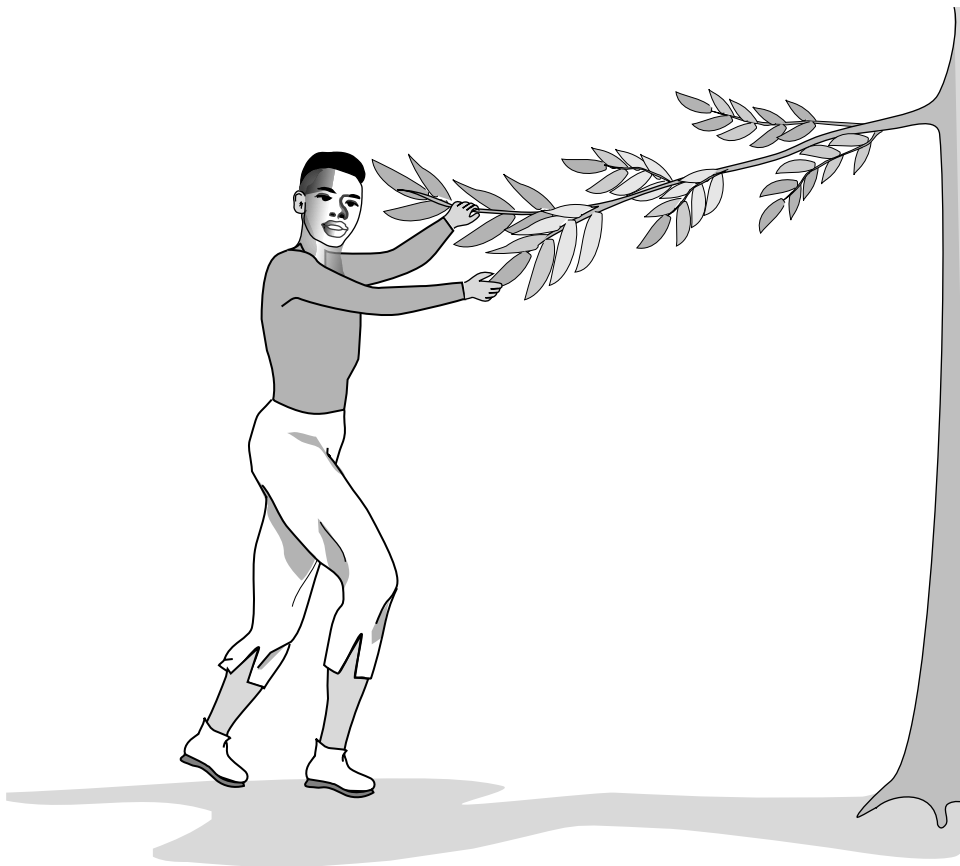
.....[2]

- 8 (a) A student carried out an investigation to find out if the leaves on the shady side of a tree were longer than the leaves on the sunny side of the same tree. He collected 30 leaves from the shady side, measured the length of each leaf, and calculated the average length. He repeated this on the sunny side of the tree. Table 8.1 summarises his results.

Table 8.1

position on tree	length of shortest leaf / mm	length of longest leaf / mm	average length of leaves / mm
shady side	22	56	42
sunny side	23	48	39

- (i) When the student collected the leaves, he was careful always to pick leaves near to the end of a branch rather than leaves close to the trunk of the tree.



Explain why this would help to make his results more reliable.

.....

.....

..... [2]

- (ii) The student thought that his results suggested that the leaves on the shaded side of the tree were longer than those on the sunny side, but he was not quite sure about this.

State **one** piece of evidence in Table 8.1 that supports this conclusion, and **one** piece of evidence which does not support it.

evidence that supports this conclusion

.....

evidence that does not support this conclusion

.....[2]

- (iii) Variation can be caused by genetic factors or by environmental factors. Explain why variation in leaf length on the two sides of the tree must be caused by environmental factors.

.....

.....[1]

- (b) One branch of the tree had leaves which were partly pale yellow and partly green. The student decided that this must have happened because of a mutation in the cells from which that branch grew.

- (i) Explain what is meant by the term *mutation*.

.....

.....

.....[2]

- (ii) Explain how a mutation that happened in one cell in the tree could result in many cells all containing this mutation.

.....

.....

.....[2]

- (iii) Explain why a tree with partly yellow and partly green leaves is likely to grow more slowly than a tree with normal, green leaves.

.....

.....

.....

.....[3]

- 9 Gasoline and diesel are liquid mixtures of hydrocarbons used as fuels. Fig. 9.1 shows the graphical (displayed) formula of a typical molecule in gasoline.

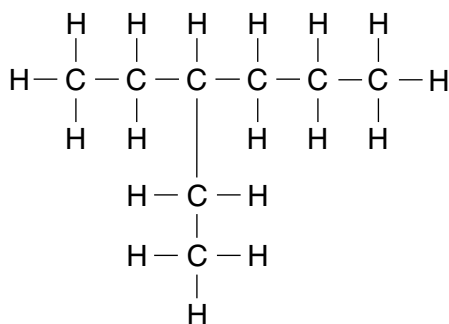


Fig. 9.1

- (a) (i) Why is this molecule described as a *hydrocarbon*?

.....
[1]

- (ii) Write the molecular formula of the molecule in Fig. 9.1.

.....[1]

- (iii) Name the homologous series to which the molecule in Fig. 9.1 belongs.

.....[1]

- (b) Table 9.1 shows some properties of gasoline and diesel.

Table 9.1

fuel	temperature range over which the fuel boils / °C	viscosity (how easily the liquid flows)
gasoline	40 to 205	runny (flows easily)
diesel	250 to 350	viscous (does not flow so easily)

Explain briefly why the properties of these fuels are different.

.....

[2]

(c) Ethene, C_2H_4 , is an important unsaturated hydrocarbon.

(i) Explain why ethene is described as *unsaturated*.

.....
.....[1]

(ii) Describe a chemical test and its result which would show that ethene is unsaturated.

.....
.....
.....[2]

(iii) Millions of tonnes of ethene are used in chemical industries world-wide each year. Ethene burns easily and releases much heat when it does so.

Suggest why the world's chemical industries consider ethene too valuable to use as a fuel.

.....
.....
.....[2]

(d) Describe briefly how ethene can be converted into ethanol, C_2H_6O , and write a balanced equation for the reaction.

.....
.....
.....
.....[3]

- 10 A student compares four different wires to see which is the best conductor of electricity. He passes a current of 0.8 A through each wire and measures the voltage needed.

Table 10.1 shows his results.

Table 10.1

wire	voltage / V
aluminium	2.4
copper	1.6
silver	1.4
steel	24.0

- (a) Which wire is the best conductor of electricity? Explain your answer.

.....

[2]

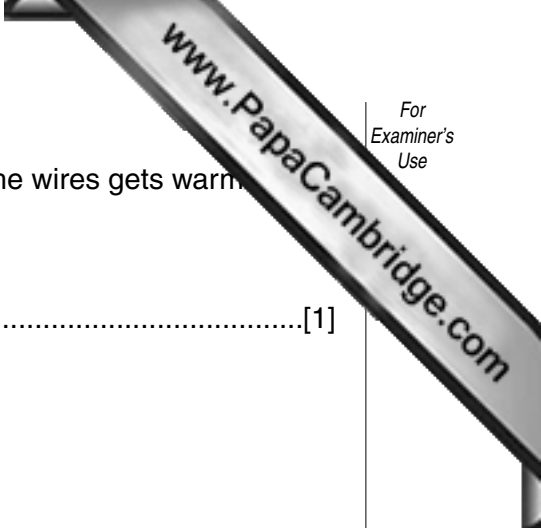
- (b) Calculate the resistance of the silver wire.

Show your working and state the formula that you use.

formula

working

.....[2]



(c) While doing this experiment, the student notices that one of the wires gets warm.

(i) Which wire is most likely to become noticeably warm?

.....[1]

(ii) Calculate the power in this wire.

Show your working and state the formula that you use.

formula

working

.....[2]

(d) The data in Table 10.2 are obtained using samples of copper, aluminium and steel wires. Each wire is 100 m long and has a diameter of 2 mm.

Table 10.2

material	resistance / Ω	force needed to break wire / N	density / kg per m^3	cost of wire / \$
aluminium	3	150	2700	4
copper	2	300	8900	14
steel	30	1500	7700	1

Use these data to explain why many overhead power cables are made out of aluminium with a steel core.

.....

[3]

Copyright Acknowledgements:

Question 3. Reproduced by permission of Oxford University Press Australia from *A Field Guide to Mammals of Australia* by: Menkhorst and Knight © Oxford University Press www.oup.com.au

The University of Cambridge Local Examinations Syndicate has made every effort to trace copyright holders, but if we have inadvertently overlooked any we will be pleased to make the necessary arrangements at the first opportunity.

University of Cambridge International Examinations is part of the University of Cambridge Local Examinations Syndicate (UCLES), which is itself a department of the University of Cambridge

DATA SHEET
The Periodic Table of the Elements

		Group									
		I	II	III	IV	V	VI	VII	VIII	IX	X
7	Li Lithium	1	2	3	4	5	6	7	8	9	10
9	Be Beryllium	1 H Hydrogen									
11	B Boron	12	13	14	15	16	17	18	19	20	21
13	Al Aluminium	14	15	16	17	18	19	20	21	22	23
19	K Potassium	20	21	22	23	24	25	26	27	28	29
23	Na Sodium	24	25	26	27	28	29	30	31	32	33
25	Mg Magnesium	26	27	28	29	30	31	32	33	34	35
39	K Potassium	40	41	42	43	44	45	46	47	48	49
39	Ca Calcium	40	41	42	43	44	45	46	47	48	49
55	Rb Rubidium	56	57	58	59	60	61	62	63	64	65
55	Sr Strontium	56	57	58	59	60	61	62	63	64	65
87	Fr Francium	88	89	90	91	92	93	94	95	96	97
87	Ba Barium	88	89	90	91	92	93	94	95	96	97
133	Cs Caesium	134	135	136	137	138	139	140	141	142	143
133	Ba Barium	134	135	136	137	138	139	140	141	142	143
226	Ra Radium	227	228	229	230	231	232	233	234	235	236
226	Ac Actinium	227	228	229	230	231	232	233	234	235	236

173	Lu Lutetium	174	175	176	177	178	179	180	181	182	183
71	Yb Ytterbium	72	73	74	75	76	77	78	79	80	81
71	Tm Thulium	72	73	74	75	76	77	78	79	80	81
102	No Nobelium	103	104	105	106	107	108	109	110	111	112
102	Md Mendelevium	103	104	105	106	107	108	109	110	111	112
100	Fm Fermium	101	102	103	104	105	106	107	108	109	110
100	Es Einsteinium	101	102	103	104	105	106	107	108	109	110
83	Bi Bismuth	84	85	86	87	88	89	90	91	92	93
83	Po Polonium	84	85	86	87	88	89	90	91	92	93
85	At Astatine	86	87	88	89	90	91	92	93	94	95
85	Rn Radon	86	87	88	89	90	91	92	93	94	95

3-71 Lanthanoid series
0-103 Actinoid series

a = relative atomic mass
X = atomic symbol
b = proton (atomic) number

The volume of one mole of any gas is 24 dm³ at room temperature and pressure (r.t.p.).